



INCREASING AGRICULTURE PRODUCTION ACROSS AFRICA



# CORPORATE OVERVIEW

CBM Developments Ltd. is an agriculture development company committed to increasing efficiency and productivity in the agriculture sector in Nigeria by offering innovative solutions and a range of technical and financial services to aid foreign direct investments into the sector.

We provide agriculture development consultancy services, project financing services, irrigation infrastructure services and products, and equipment and machinery services to our private and public sector clients.

We are a convenient one stop shop for all agricultural requirements attracting customers and decision makers across subsectors. Our network base of government entities, financiers, farmers, producers and suppliers will provide automotive access to expansion and integration opportunities.

## CORE VALUES



### Innovation

Unlocking opportunities and creating avenues for development is central to CBM's operations



### Impact

Increasing productivity in the agriculture sector, creating employment opportunities and reaching global food security goals.



### Integrity

Serving our clients with the highest level of honesty, transparency, & accountability is paramount.



### Sustainability

Adopting practices reduce reliance on nonrenewable energy, reduce chemical use and save scarce resources.



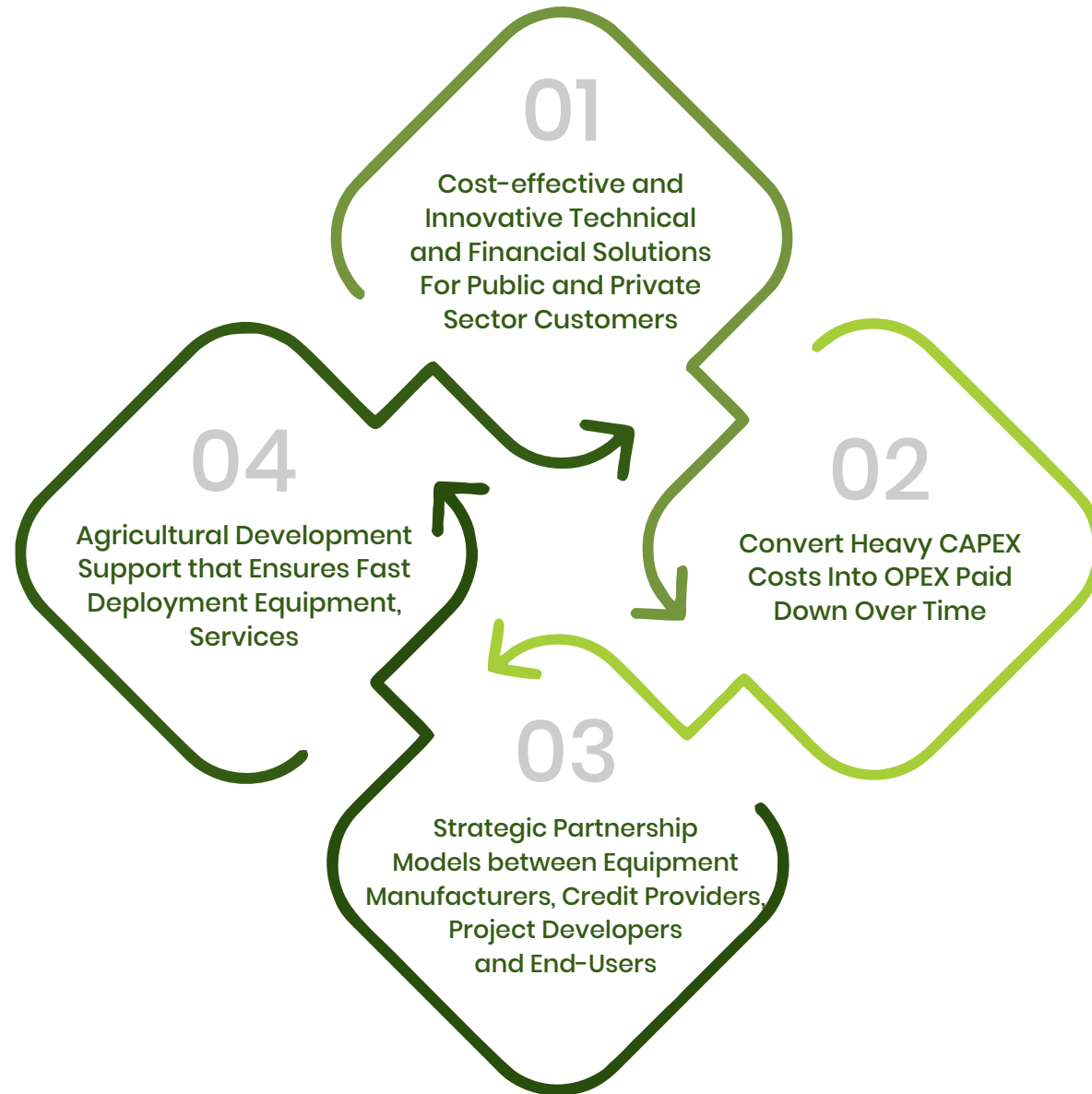
### Productivity

Through improvements in production efficiency and technology resulting in better profitability and competitiveness



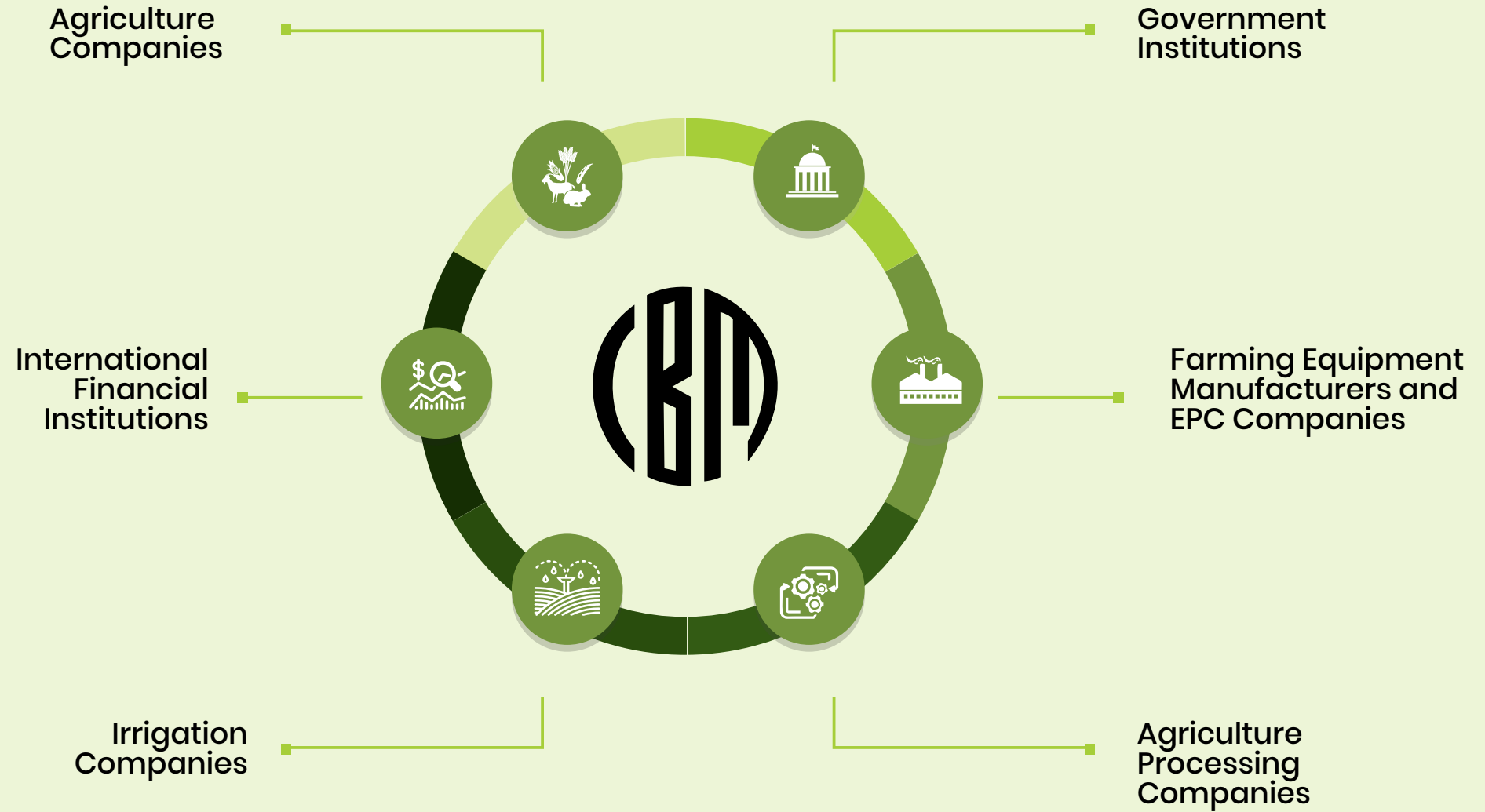


# VALUE PROPOSITION





# CLIENTS

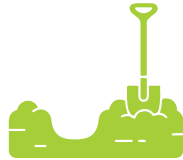


# CORE SERVICES



## IRRIGATION INFRASTRUCTURE

We offer full irrigation development services from financial services for irrigation development for public and private sector clients to technical services, including system design and development & equipment installation etc.



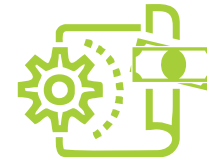
## LAND PREPARATION

We offer equipment sourcing advisory services, direct sale of equipment, and direct contractual land preparation services with the highest standards of equipment.



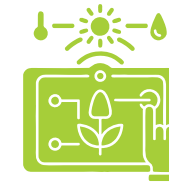
## FULL SCALE FARM DEVELOPMENT SERVICES

Full feasibility to design, agronomic advisory services, operational budget development, land identification and suitability analysis, creating EPC tenders, crop suitability analysis, seed development and sales



## PROJECT DEVELOPMENT & FINANCE

We use our knowledge, relationships and internal resources to de-risk client projects and increasing the chances of success in capital raise . We also offer advisory services for insurance and financial management of client projects.



## FARM MANAGEMENT SERVICES

Manage entire crop growth activities including, but not limited to pre-season soil tests and fertilizer plans, input product orders and purchases.



## SURVEYING

Accurate surveying in the planning and development stage of any agriculture project is arguably the most important activity. This is why it is important to have the highest quality monitoring and implementing team doing surveys.

# CBM DEVELOPMENTS TEAM



**Telia Urey**  
*Director*

Telia Urey is an entrepreneur with over 10 years of experience in leading and directing businesses in Africa. In 2011, Telia formed Core Investment Group (CIG in Liberia), one of Liberia's leading real estate development companies. Telia is also the CEO of Cape Mano Group, a group of companies operating in oil and gas, technology and agriculture sectors. She holds positions on several boards to include PLC Investments and Wulki Farms Inc. Telia earned a Bachelor of Arts from McGill University in Political Science and Economic.



**Richard Ferguson**  
*Director*

Richard Ferguson is Founder of Ferguson Cardo, a consultancy. His career began in 1989 with the British Linen Bank, an Edinburgh-based investment bank. In 1993 he relocated to Hong Kong where he became the first European to work for a Chinese investment bank. He spent nine years in Asia working as an analyst covering mostly the telecoms, media and technology sectors for Shanghai International, Schroders and Nomura. After a four-year spell in Latin America and Paris, Richard relocated to London as a founder member of Nomura's new emerging markets group. During this period, he formed an agriculture research function for the bank. After a spell at Moscow-based Renaissance Capital, Richard established Ferguson Cardo, an agribusiness consultancy. He has worked on many agribusiness fundraisings in Latin America (Liberio Holdings), Africa (Feronia, Zambeef) and the CIS (Black Earth Farming, RusAgro, PhosAgro). He has also provided independent strategic advice to various companies and organizations including Black Earth Farming in Russia, Feronia in the DRC, Agrokultura in Ukraine, Amorim SA in Portugal and the Centre for Agriculture & Biosciences International in the UK. He is currently an investment advisor to the Agricultural Transformation Initiative (ATI) which seeks to diversify the Malawian economy from its dependence on tobacco exports.



**Ifeanyi Ajuluchukwu**  
*Director*

Prior to founding Montserrado, Ifeanyi Ajuluchukwu spent over a decade in Corporate and Investment Banking with a focus on project finance transactions within the Oil and Gas sector and later on in the Telecommunications Industry. He joined Century Group as an Executive Director in charge of Strategy and Diversification and sat on the board of Century Ports and Terminals Limited. Ifeanyi currently serves as the Chief Executive Officer and Board Member of Montserrado. He holds a B.Sc in Economics from the University of Lagos and an M.Sc. in International Finance from the Leeds University Business School (UK).



**Pieter Grobler**  
*Director*

Pieter Grobler is a co-founder of BTFS and a valuable core member of our team. He was responsible for land development at Dangote Rice in Nigeria 2014-2021, and previously for the rollout of 10,000 ha rice operation for Olam International. He has also had experience in Tanzania, Zimbabwe, South Africa. Some of Pieter's expertise cover preliminary analysis on Google Earth Professional to determine topographic suitability for irrigation and drainage, soil tests and water availability test, strategic planning and budgeting, LIDAR surveys and mapping.



**Oladotun Andre**  
*Director*

Oladotun Andre is a graduate of Electrical/Electronics Engineering from the Ambrose Alli University Edo State and a Corporate Member of the Nigerian Society of Engineers. He holds Control systems automation certificates from Rockwell Automation University South Africa and a Hydrocarbon measurement and control systems certificate from Jiskoot UK. He has over 15 years' experience in the Oil and Gas sector, where he has worked in different capacities on projects for the oil majors in and outside Africa throughout his Technical career. He is a certified Instrumentation, Control and Automation Engineer and has been involved in various EPC, Installation, Operations, Commissioning and Maintenance Multi-Million-dollar projects across the oil and gas producing assets. He serves on the Board of Deerfield Integrated Services Limited a fast-growing indigenous Oil and Gas services firm and he is the Chief Technical Officer of Montserrado.



# CBM SERVICE PARTNERS





- Established in 1957
- Manufactures leading industrial, agricultural, irrigation equipments around the world.
- Provides quality products, parts and after sale services throughout Saudi Arabia, Africa, Europe and select international markets
- In more than 40 countries across 6 continents.
- Over 2,800 qualified & talented employees
- Suppliers of Centre Pivot across the globe.



### Centre Pivot Irrigation International Presence

Place	Area Irrigated with AIC's Systems (Ha)	Number of Centre Pivot Irrigation Systems
Saudi Arabia	400,000	10,000
Iraq	200,000	5,000
Egypt	200,000	4,000
Turkey	30,000	600
Cuba	125,000	500
North America	150,000	3,000
South America	300,000	6,000



01



## CANAL SUGAR

Value of funding

**\$ 50 Million**

Project Status

**Being implemented**

Country

**Egypt**

Continent

**Africa**



02



## Cuba Government

Value of funding

**\$ 50 Million**

Project Status

**Being implemented**

Country

**Cuba**

Continent

**Caribbean Island between  
North and South America**

03



## SUDAN COTTON COMPANY

Value of funding

**\$ 35 Million**

Project Status

**Completed**

Country  
**Sudan**

Continent  
**Africa**



04



## RAKHAA FOR AGRICULTURE DEVELOPMENT

Value of funding

**\$ 30 Million**

Project Status

**Completed**

Country  
**Egypt**

Continent  
**Africa**





📍 12 Konoko Crescent,  
Wuse 2, Abuja

☎ +234 916 122 2111

✉ [info@cbmdevelopmentsafrica.com](mailto:info@cbmdevelopmentsafrica.com)

🌐 [www.cbmdevelopmentsafrica.com](http://www.cbmdevelopmentsafrica.com)